

NADIJET



JET FAN VENTILATION SYSTEM FOR CAR PARKS

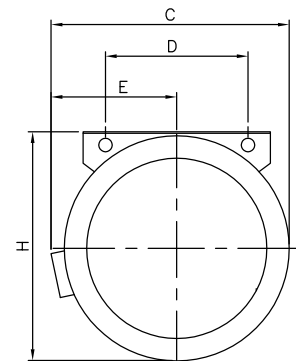
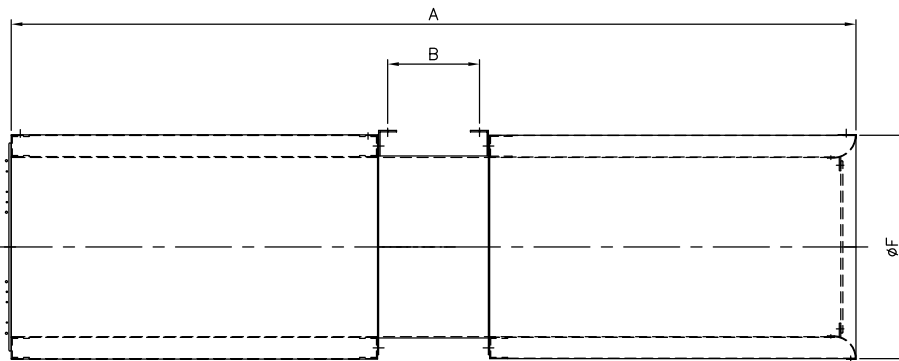
- Regular use at ambient temperature
- Smoke extraction in case of fire F300 (300 °C/120 min.) available on request
- Impeller specially designed for low noise
- Fan dynamically balanced for low vibration
- Motor IP55, Insulation class H (smoke extract) Motors IP55, insulation class F (Normal condition), according to EN 60034-5/IEC 85
- 50/60 Hz Range available



* Reversible available on request

JET FAN				
Model No		NJF 315	NJF 355	NJF 400
Voltage/Frequency	V / 50 Hz	415	415	415
Phase	~	3	3	3
Speed	rpm	2840/1380	2840/1380	2840/1380
Rated power	kW	0.76/0.18	1.5/0.4	1.6/0.5
Rated current	A	1.84/0.66	3.44/0.83	3.1/1.09
Thrust	N	21/5	36/8	54/13
Air volume	m3/h	4350/2150	6375/3175	8650/4300
Weight	kg	55	68	75
Sound Level	dba	64/47	67/51	66/49

NJF FAN DIMENSION DATA			
SIZE	315	355	400
H	430	470	510
A	1545	1705	1885
B	205	205	205
C	448	486	531
D	290	350	350
E	240	258	280
F Ø	415	455	500



The Company reserves the right to make changes of technical data without prior notice.



NADI Airtechnics Pvt. Ltd.

34, GNT Road, Ponniammanmedu, Madhavaram, Chennai
600 110, Tamil Nadu, India

Ph: +91 44 2553 2212 / 2213 | Fax: +91 44 2553 2205

Email: info@nadiindia.com | www.nadiindia.com