



Rectangular duct fans

Caissons de ventilation pour gaines rectangulaires

Rechteckige Kanalventilatoren

Прямоугольные каналные вентиляторы



Rectangular ducts fans for ventilation and air conditioning systems, mounted into a system of rectangular air ducts. Used for the air supply or extract. Not suitable for polluted air, aggressive and explosive gases. Compact, mounted in any position. Easily opened doors for cleaning an impeller.

Impeller with backward curved blades, made of plastic or galvanized steel.

Motor: external rotor, motor protection built-in thermal-contact, free-maintenance ball bearings.

Housing: made of galvanized steel.



Rechteckige Kanalventilatoren, die für Lüftungs- und Klimaanlagen bestimmt sind, werden in das System der rechteckigen Luftführungskanäle montiert. Sie werden für Zuluft und Abluft verwendet. Nicht geeignet für die Beförderung von verschmutzter Luft, aggressiven, explosiven Gasen. Kompakt, leise funktionierend, Montage in jeder beliebigen Stellung, das Flügelwerk ist leicht zur Reinigung herausnehmbar.

Lauftrad ist rückwärts gekrümmt, aus Kunststoff bzw. verzinktem Stahl.

Der Motor: Außenrotor, Direktantrieb, integrierter Thermokontakt-Motorschutz, dauerhafte, keine Pflege erfordernde Lager.

Das Gehäuse: aus verzinktem Blech.



Les caissons de ventilation pour gaines rectangulaires destinés aux systèmes de ventilation et de climatisation en montage sur conduits d'air rectangulaires. Utilisation en apport d'air neuf ou extraction d'air vicié. Le produit n'est pas adapté au transport d'air fortement pollué, de gaz agressifs ou explosifs. Compacts, fonctionnement silencieux, montés dans n'importe quelle position, la turbine peut facilement s'enlever pour être nettoyée.

Turbine : réaction (pales incurvées vers l'arrière), plastique ou acier galvanisé.

Moteur : rotor extérieur, rotor extérieur, entraînement direct, protection moteur intégrée par thermocontact, roulements à longue durée de vie et ne nécessitant pas d'entretien.

Enveloppe : tôle d'acier galvanisée.



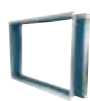
Прямоугольные каналные вентиляторы для систем вентиляции и кондиционирования, устанавливаются в систему прямоугольных воздуховодов. Эксплуатируются в целях подачи и вытяжки воздуха. Не используются при транспортировке загрязнённого воздуха, агрессивных, взрывоопасных газов. Компактные, бесшумные, устанавливаются в любом положении, крыльчатка легко извлекается для чистки.

Крыльчатка: загнутые назад лопасти, пластмасса или оцинкованная сталь.

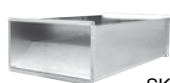
Двигатель: наружный ротор, прямая передача, встроенные термоконтакты двигателя, не требующие ухода подшипники с длительным сроком службы.

Корпус: оцинкованной жести.

Accessories



LJ/E
LJ/PG
p. 236-237



SKS
p. 203



FDS
p. 196



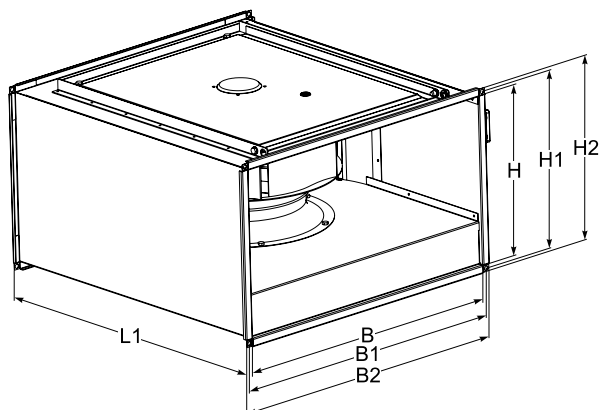
EKS
p. 164



TGRV
p. 185



TGRT
p. 186

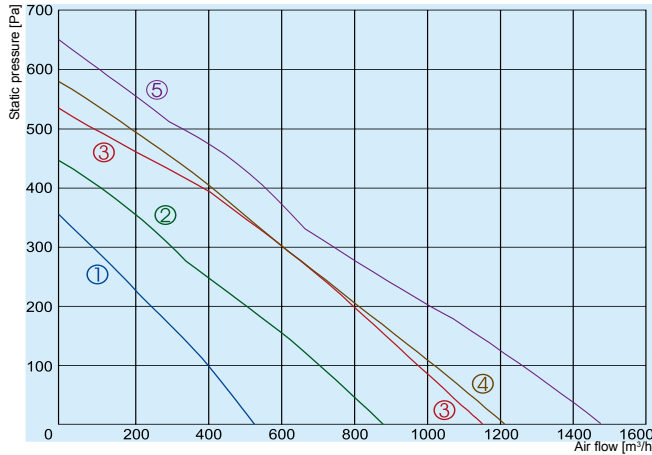


Type	Dimensions [mm]						
	B	B1	B2	H	H1	H2	L1
VKSB 300x150	300	320	340	150	170	190	400
VKSB 400x200	400	420	440	200	220	240	445
VKSB 500x250	500	520	540	250	270	290	530
VKSB 500x300	500	520	540	300	320	340	560
VKSB 600x300	600	620	640	300	320	340	640
VKSB 600x350	600	620	640	350	370	390	700
VKSB 700x400	700	720	740	400	420	440	780
VKSB 800x500	800	820	840	500	520	540	880
VKSB 1000x500	1000	1020	1040	500	520	540	980

Accessories

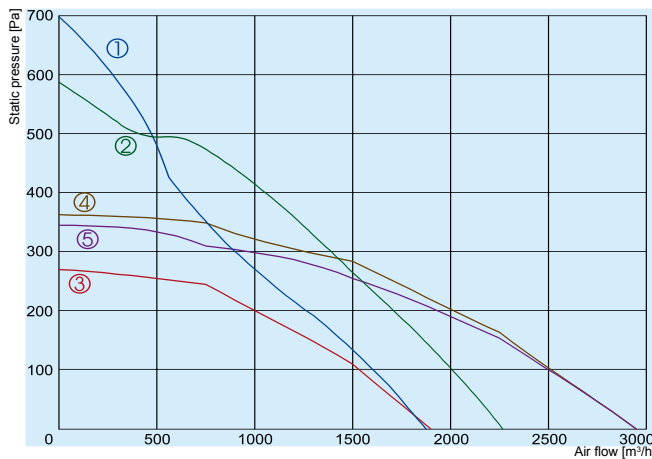


MTY
p. 188



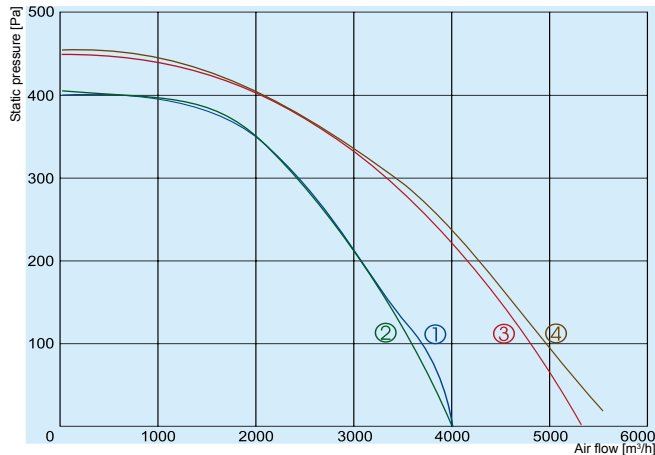
- ① VKSB 300x150-2 L1
- ② VKSB 400x200-2 L1
- ③ VKSB 400x200-2S L1
- ④ VKSB 500x250-2 L1
- ⑤ VKSB 500x250-2S L1

		300x150-2 L1	400x200-2 L1	400x200-2S L1	500x250-2 L1	500x250-2S L1
Voltage/Frequency	[V/Hz]	230/50	230/50	230/50	230/50	230/50
Power consumption	[kW]	0,067	0,105	0,170	0,181	0,237
Current	[A]	0,29	0,46	0,75	0,79	1,03
Speed	[min ⁻¹]	2467	2396	2458	2420	2401
Max. airflow	[m ³ /h]	527	879	1152	1215	1476
Max. air temperature	[°C]	50	40	60	60	50
Total sound power level at 1 m	[dBA]	77	81	85	87	87
Speed controller		TGRV1,5/MTY0	TGRV1,5/MTY0	TGRV1,5/MTY1	TGRV1,5/MTY1	TGRV1,5/MTY2
Weight	[kg]	7,0	11,0	11,0	16,0	16,0
Wiring diagram		No. 4	No. 4	No. 4	No. 4	No. 4
Protection class:	motor	IP-44	IP-44	IP-44	IP-44	IP-44
	terminal box	IP-54	IP-54	IP-54	IP-54	IP-54



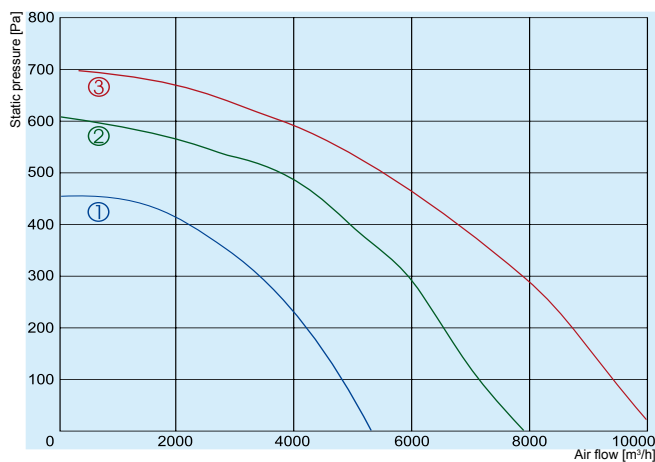
- ① VKSB 500x300-2 L1
- ② VKSB 500x300-2S L1
- ③ VKSB 500x300-4 L3
- ④ VKSB 600x300-4 L1
- ⑤ VKSB 600x300-4 L3

		500x300-2 L1	500x300-2S L1	500x300-4 L3	600x300-4 L1	600x300-4 L3
Voltage/Frequency	[V/Hz]	230/50	230/50	400/50	230/50	400/50
Power consumption	[kW]	0,313	0,388	0,15	0,31	0,27
Current	[A]	1,3	1,74	0,36	1,35	0,47
Speed	[min ⁻¹]	2225	2750	1400	1370	1310
Max. airflow	[m ³ /h]	1872	2295	1880	2930	2930
Max. air temperature	[°C]	40	60	70	65	60
Total sound power level at 1 m	[dBA]	87	75	73	78	77
Speed controller		TGRV1,5/MTY2	TGRV1,5/MTY2	TGRT1	TGRV1,5/MTY2	TGRT1
Weight	[kg]	17,0	17,0	18,0	19,0	21,0
Wiring diagram		No. 4	No.1	No. 3	No. 2	No. 3
Protection class:	motor	IP-44	IP-44	IP-54	IP-54	IP-54
	terminal box	IP-54	IP-54	IP-54	IP-54	IP-54



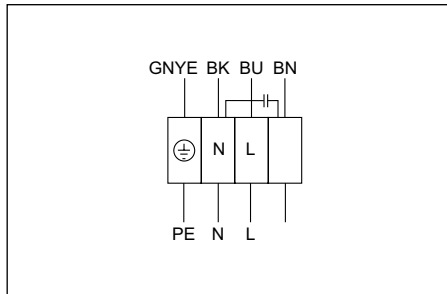
- ① VKSB 600x350-4 L1
- ② VKSB 600x350-4 L3
- ③ VKSB 700x400-4 L1
- ④ VKSB 700x400-4 L3

		600x350-4 L1	600x350-4 L3	700x400-4 L1	700x400-4 L3
Voltage/Frequency	[V/Hz]	230/50	400/50	230/50	400/50
Power consumption	[kW]	0,52	0,46	0,74	0,69
Current	[A]	2,2	0,85	3,2	1,3
Speed	[min ⁻¹]	1360	1340	1280	1230
Max. airflow	[m ³ /h]	4010	4000	5330	5540
Max. air temperature	[°C]	40	55	60	40
Total sound power level at 1 m	[dBA]	77	77	83	83
Speed controller		TGRV3/MTY4	TGRT1	TGRV4/MTY4	TGRT2
Weight	[kg]	24,0	27,0	48,0	64,0
Wiring diagram		No. 2	No. 3	No. 2	No. 3
Protection class:	motor	IP-54	IP-54	IP-54	IP-54
	terminal box	IP-54	IP-54	IP-54	IP-54



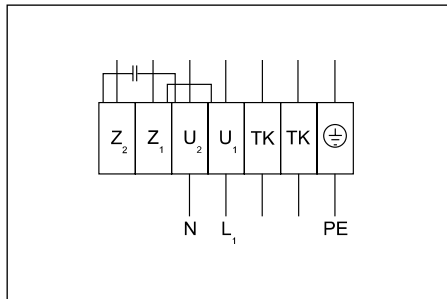
- ① VKSB 800x500-4 L1
- ② VKSB 800x500-4 L3
- ③ VKSB 1000x500-4 L3

		800x500-4 L1	800x500-4 L3	1000x500-4 L3
Voltage/Frequency	[V/Hz]	230/50	400/50	400/50
Power consumption	[kW]	0,74	1,25	1,8
Current	[A]	3,2	2,3	3,4
Speed	[min ⁻¹]	1280	1340	1230
Max. airflow	[m ³ /h]	5300	7900	10000
Max. air temperature	[°C]	60	45	40
Total sound power level at 1 m	[dBA]	83	85	86
Speed controller		TGRV4/MTY4	TGRT3	TGRT4
Weight	[kg]	56,0	69,0	89,0
Wiring diagram		No. 2	No. 3	No. 3
Protection class:	motor	IP-54	IP-54	IP-54
	terminal box	IP-54	IP-54	IP-54



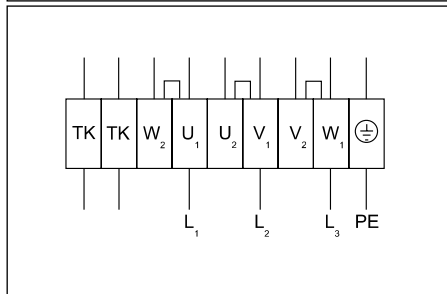
Wiring diagram No. 1 (1~230V)

GNYE - green-yellow
 BK - black
 BU - blue
 BN - brown



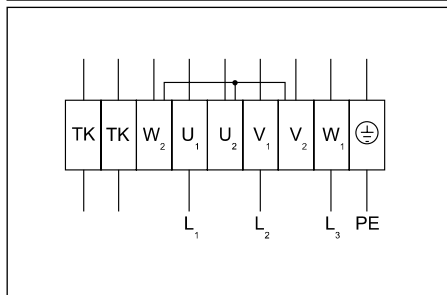
Wiring diagram No. 2 (1~230V)

U₁ - brown
 U₂ - blue
 Z₁ - black
 Z₂ - orange
 TK - white



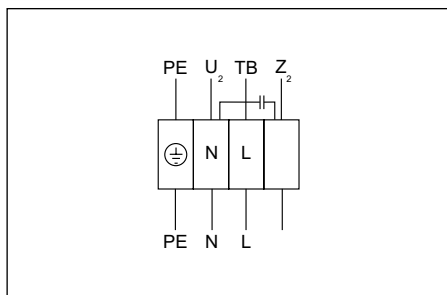
Wiring diagram No. 3 (Δ - 3~230V)

U₁ - brown
 U₂ - red
 V₁ - blue
 V₂ - grey
 W₁ - black
 W₂ - orange
 TK - white



Wiring diagram No. 3 (Y - 3~400V)

U₁ - brown
 U₂ - red
 V₁ - blue
 V₂ - grey
 W₁ - black
 W₂ - orange
 TK - white



Wiring diagram No. 4 (1~230V)

U₂ - blue or grey
 Z₂ - black
 TB - brown